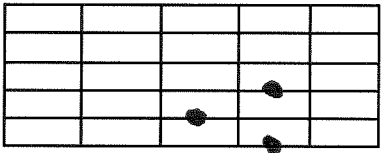


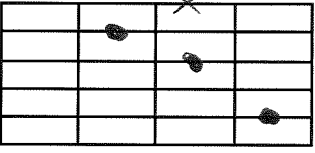
D

132



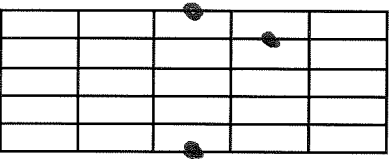
C

321



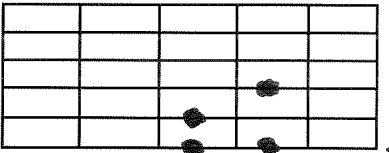
G

324



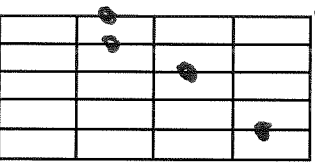
Dsus2

134



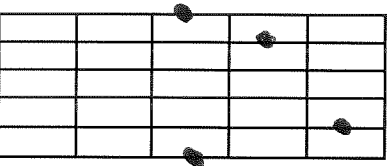
F#11C

3421



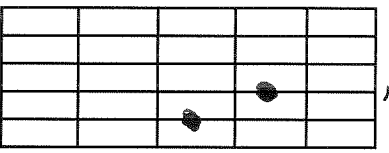
Gsus

3214



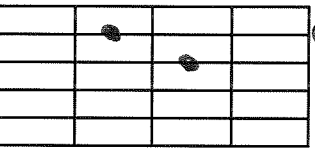
D2

23



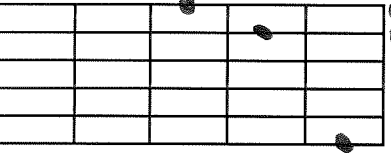
C+7

32



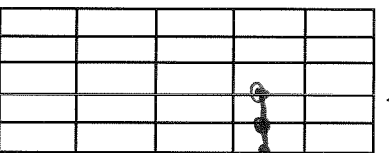
G7

321



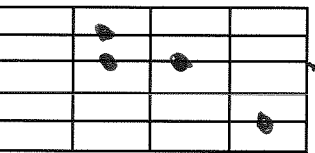
D+7

111



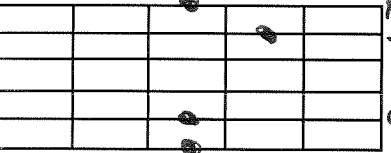
Gsus

321



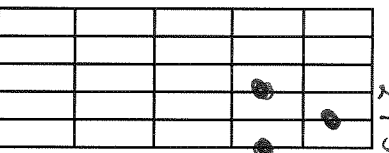
F#11C

2134



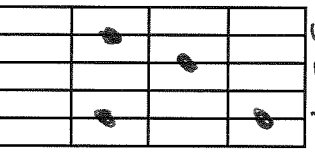
D7

213



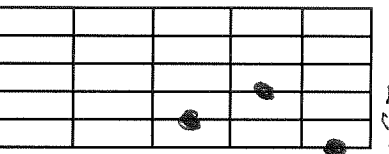
C2

324



Dm

231



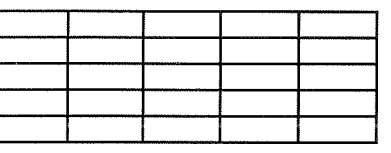
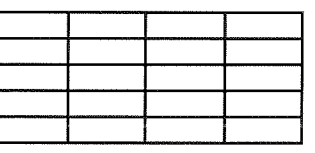
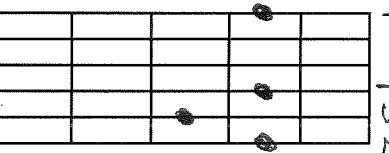
C2

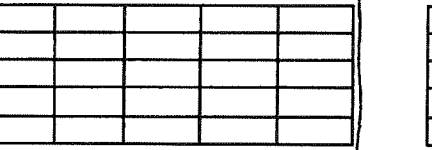
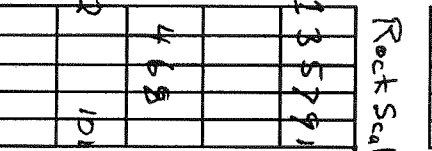
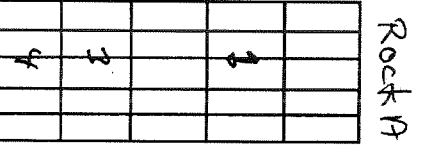
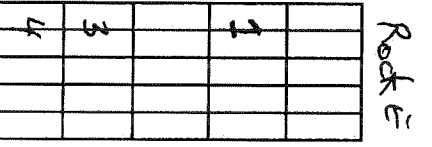
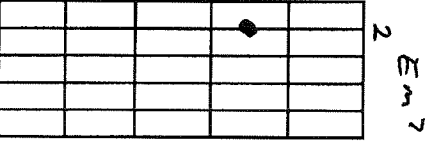
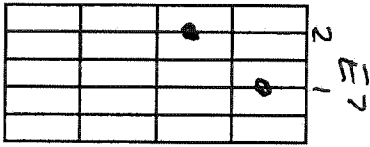
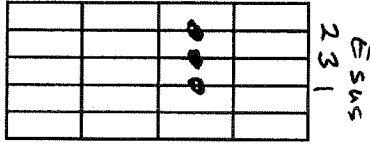
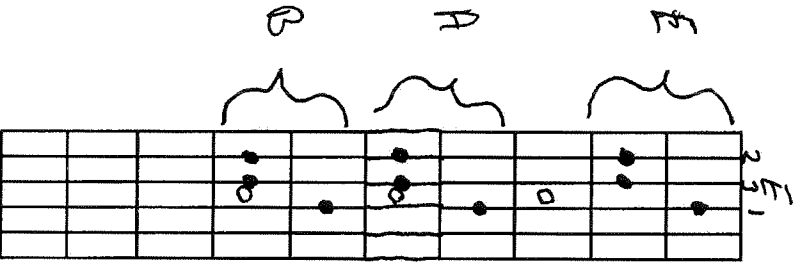
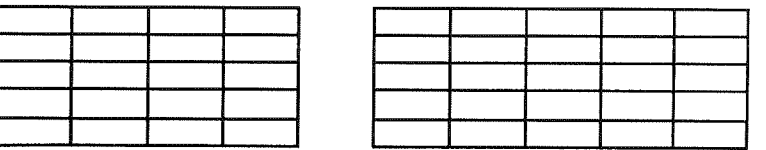
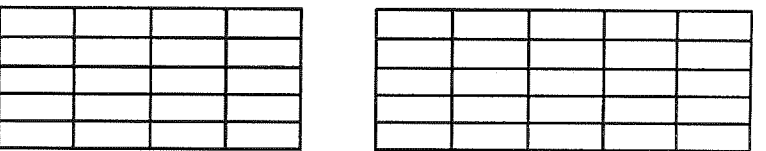
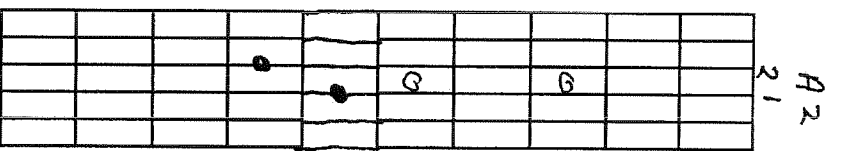
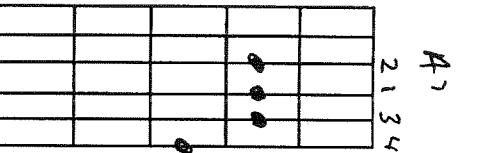
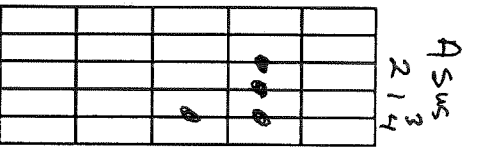
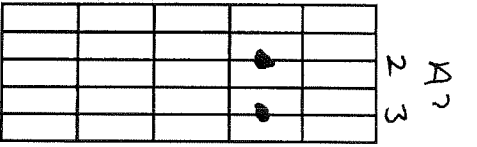
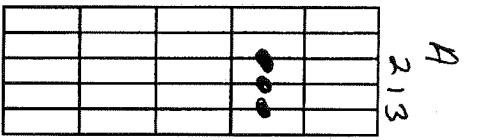
2134



D/F#

T132





just slide you
E up the neck

Play 1, then
3, then 4

Play 1, then
3, then 4

D 1 2 4 F#